

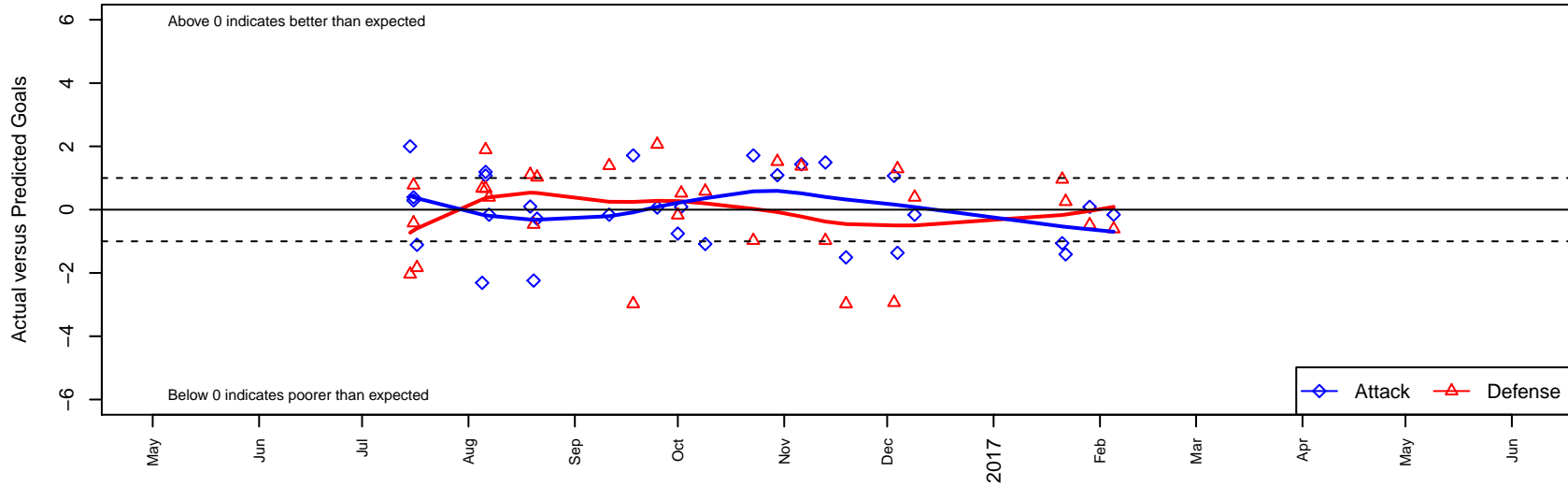
# Seattle United Tango B01

Seattle United  
 Seattle, WA  
 B01 total strength=1550  
 attack=18.85 defense=9.62  
 fall league = RCL B01 Div 2  
 notes= Mitalas 2015

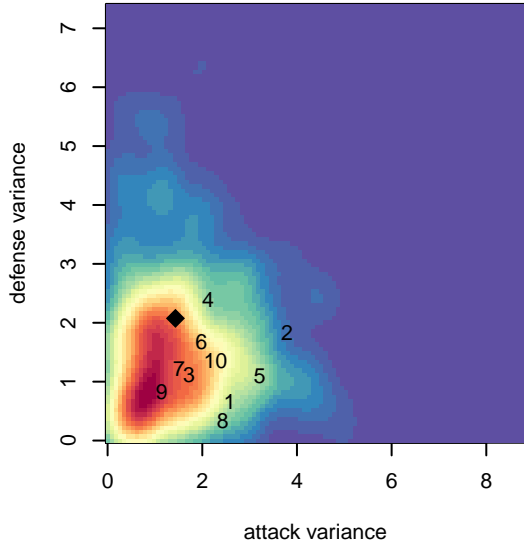
alt names used:  
 SU Tango  
 SEATTLE UNITED B01 TANGO (WA)  
 Seattle United B01 Tango  
 Seattle United B01 Tango B  
 Seattle United B01 Tango B

Venues played:  
 2016 Beaverton Cup BU16 Silver  
 2016 Eastside FC Cup BU16  
 2016 Bigfoot Gold U16  
 2016 RCL B01 Div 2  
 2016 WYS Presidents Cup B01 Div 1

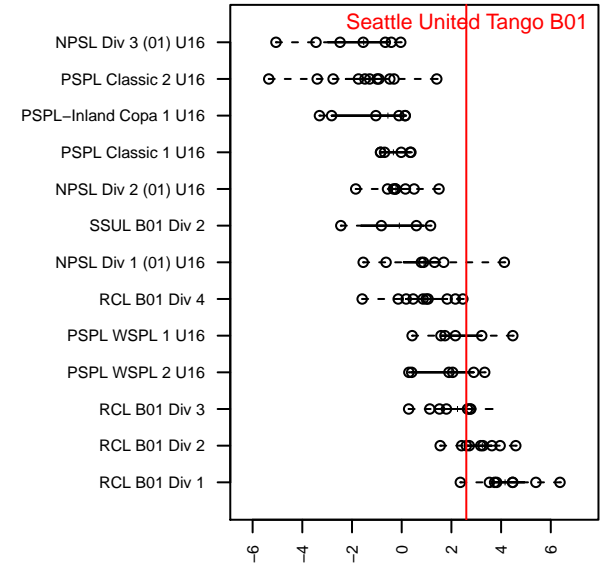
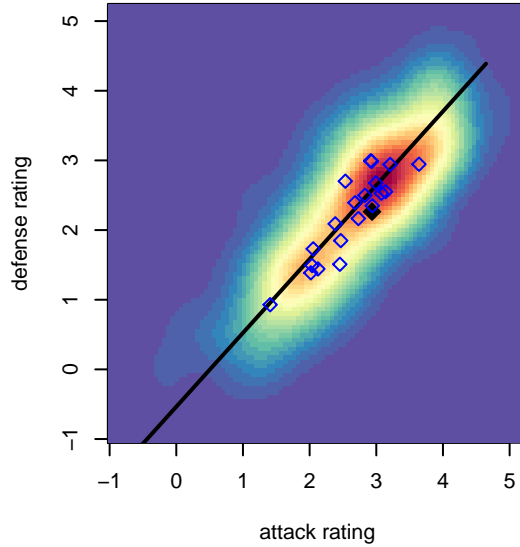
**Seattle United Tango B01**  
 Dots are actual minus expected GF (blue circles) and GA (red triangles).  
 Blue line is smoothed change in attack strength. Red is smoothed change in defense strength.



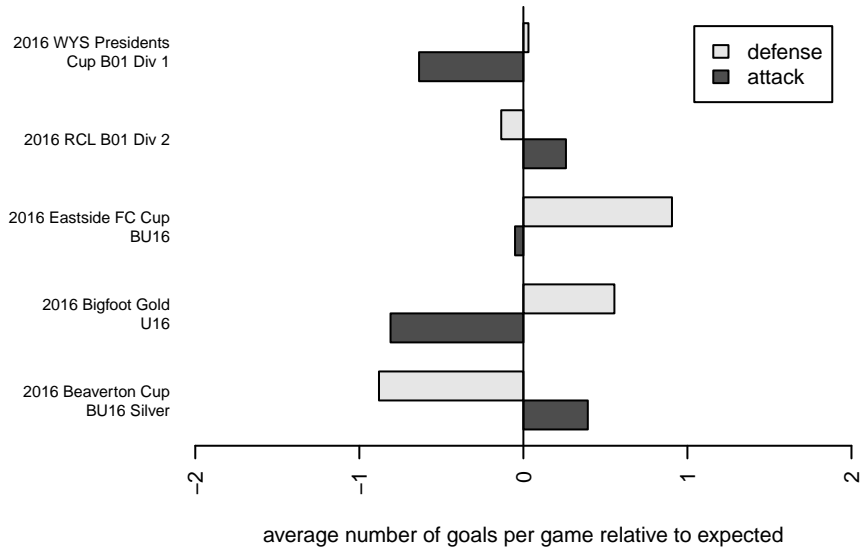
**attack and defense variance (black dot)  
relative to other teams  
and top 10 in region**



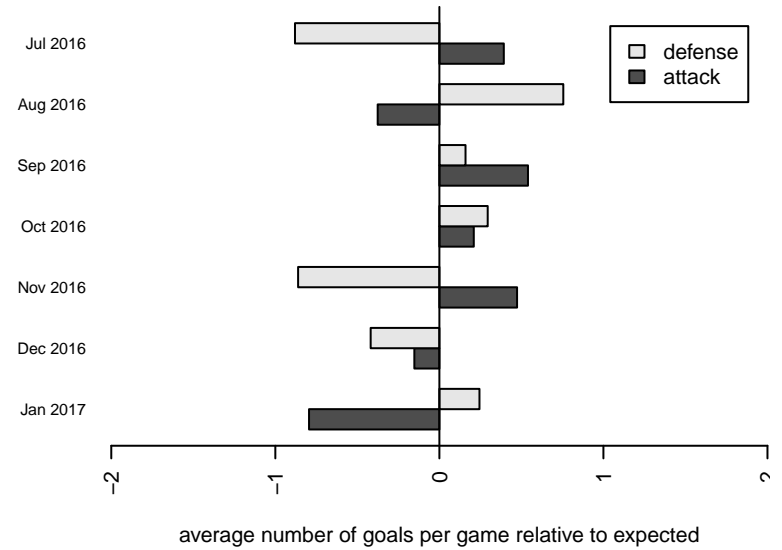
**attack and defense rating  
relative to others at age  
and all opponents in last 13 months**



**Performance relative to 13 month average**



**Performance relative to 13 month average**



<b>date</b>	<b>home</b>		<b>away</b>		<b>venue</b>	<b>pred.home</b>	<b>pred.away</b>
2017-02-05	WPFC White B01	3	Seattle United Tango B01	1	2016 WYS Presidents Cup B01 Div 1	2.39	1.16
2017-01-29	Seattle United Tango B01	2	PacNW Blue B01	2	2016 WYS Presidents Cup B01 Div 1	1.91	1.52
2017-01-22	Seattle United Tango B01	0	Kitsap Alliance FC Red B01	1	2016 WYS Presidents Cup B01 Div 1	1.41	1.25
2017-01-21	Washington Timbers White 1 B01	0	Seattle United Tango B01	2	2016 WYS Presidents Cup B01 Div 1	0.96	3.06
2016-12-09	Seattle United Tango B01	1	WPFC White B01	2	2016 RCL B01 Div 2	1.16	2.39
2016-12-04	Seattle United Tango B01	0	Whatcom Rangers Gold B01	1	2016 RCL B01 Div 2	1.37	2.29
2016-12-03	Seattle United Tango B01	2	Washington Timbers Red B01	5	2016 RCL B01 Div 2	0.93	2.06
2016-11-19	Seattle United Tango B01	1	GS Surf B B01	4	2016 RCL B01 Div 2	2.51	1.02
2016-11-13	GS Surf B B01	2	Seattle United Tango B01	4	2016 RCL B01 Div 2	1.02	2.51
2016-11-06	Crossfire Premier B B01	1	Seattle United Tango B01	3	2016 RCL B01 Div 2	2.37	1.56
2016-10-30	PacNW Blue B01	0	Seattle United Tango B01	3	2016 RCL B01 Div 2	1.52	1.91
2016-10-23	Seattle United Tango B01	3	Snohomish United Black B01	3	2016 RCL B01 Div 2	1.29	2.02
2016-10-09	WA Rush B01	3	Seattle United Tango B01	0	2016 RCL B01 Div 2	3.58	1.09
2016-10-02	Seattle United Tango B01	2	PacNW Blue B01	1	2016 RCL B01 Div 2	1.91	1.52
2016-10-01	Seattle United Tango B01	1	FWFC Blue B01	2	2016 RCL B01 Div 2	1.76	1.83
2016-09-25	Washington Timbers Red B01	0	Seattle United Tango B01	1	2016 RCL B01 Div 2	2.06	0.93
2016-09-18	Snohomish United Black B01	5	Seattle United Tango B01	3	2016 RCL B01 Div 2	2.02	1.29
2016-09-11	WPFC White B01	1	Seattle United Tango B01	1	2016 RCL B01 Div 2	2.39	1.16
2016-08-21	Snohomish United Black B01	1	Seattle United Tango B01	1	2016 Bigfoot Gold U16	2.02	1.29
2016-08-20	Seattle United Tango B01	0	Kent United Green B01	2	2016 Bigfoot Gold U16	2.24	1.53
2016-08-19	Seattle United Tango B01	3	Crossfire Select Taylor B01	0	2016 Bigfoot Gold U16	2.90	1.11
2016-08-07	Seattle United Tango B01	1	WPFC White B01	2	2016 Eastside FC Cup BU16	1.16	2.39
2016-08-06	Eastside FC White B01	0	Seattle United Tango B01	2	2016 Eastside FC Cup BU16	1.89	0.92
2016-08-06	Seattle United Tango B01	3	WPFC Navy B01	1	2016 Eastside FC Cup BU16	1.81	1.67
2016-08-05	Kitsap Alliance FC White B01	0	Seattle United Tango B01	2	2016 Eastside FC Cup BU16	0.67	4.31
2016-07-17	CSC Storm B01	3	Seattle United Tango B01	3	2016 Beaverton Cup BU16 Silver	1.17	4.11
2016-07-16	Westside Timbers Copa TS B01	1	Seattle United Tango B01	7	2016 Beaverton Cup BU16 Silver	0.58	6.71
2016-07-16	Seattle United Tango B01	6	ETFC Dortmund Black B02	0	2016 Beaverton Cup BU16 Silver	5.61	0.77

<b>date</b>	<b>home</b>		<b>away</b>		<b>venue</b>	<b>pred.home</b>	<b>pred.away</b>
2016-07-15	Seattle United Tango B01	7	Capital FC Timbers Red B01	3	2016 Beaverton Cup BU16 Silver	5	0.96